

REACH STACKER

Learner Workbook (Formative assessment)

Student copy

TLILIC0011 –

Licence to operate a reach stacker (greater than 3 tonnes capacity)



This resource was developed by



Table of Contents

Contact Details	2
Training support materials	4
Unit Description.....	4
Formative Knowledge Assessment	4
Knowledge Assessment Instructions.....	4
Performance Evidence	Error! Bookmark not defined.
Score for assessments.....	Error! Bookmark not defined.

Performance Evidence

Note: Assessor to tick each item demonstrated.

Evidence required to demonstrate competence in this unit must be relevant to and satisfy all the requirements of the elements and performance criteria on at least one occasion and include:

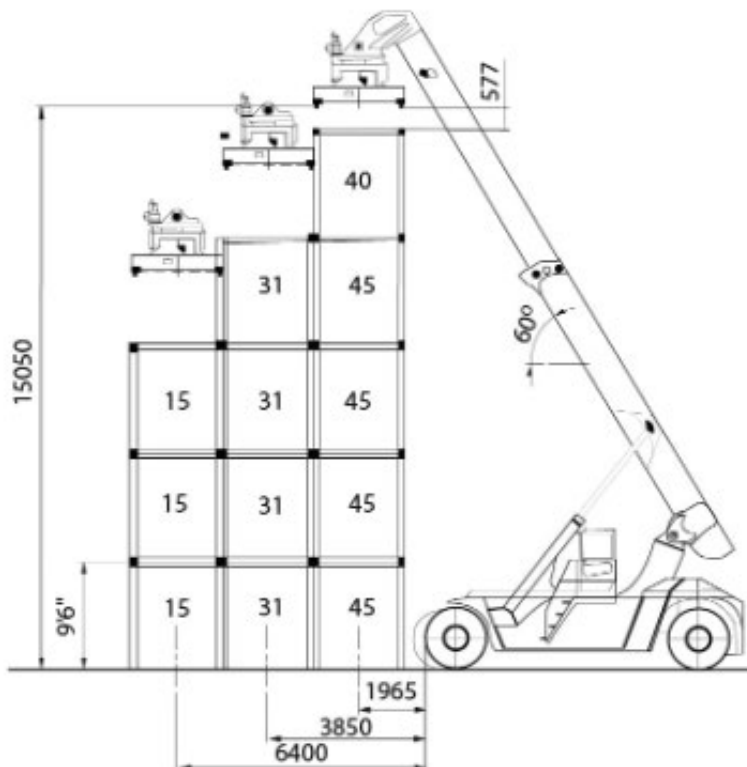
TASK 1

Applying mathematical procedures in conjunction with reach stacker load chart to determine:

- radius requirements
- container stack height
- ability to perform work/task

Note: Use a load chart to show the maximum lifting capacities of the reach stacker at various boom angles and radii (the distance from the centre of rotation to the load). This chart typically includes columns for different boom angles (e.g., 0°, 15°, 30°) and rows for different radii (usually measured in meters or feet).

For example:



TASK 2

Applying best mobile practice including:

- allowing for boom deflection
- carrying container near to ground surface
- container spreader as low as possible
- gently accelerating and braking
- minimising boom length
- minimising speed as applicable to reach stacker stability

TASK 3

Assessing suitability of planned route for reach stacker and ensuring appropriate path is in accordance with traffic management plan and is:

- clear of obstacles
- clear of personnel
- free of ramps or inclines

TASK 4

Checking container weights to ensure they are within reach stacker capacity in accordance with range diagram/container chart.

TASK 5

Communicating with other workplace personnel through using appropriate worksite protocols which must include:

- 2-way radio
- active listening
- demonstrating and interpreting hand signals
- questioning to confirm understanding
- signage/visual aids
- whistles
- written instructions

- articulating
- booming up and down
- equalising spreader
- extending/retracting spreader
- rotating spreader
- telescoping in and out
- positioning reach stacker in relevant area for next task

TASK 20

- receiving, interpreting and applying workplace instructions, safety information, emergency procedures
- reporting to relevant person/s on site risk control measures that are not in place or deficient
- receiving and interpreting workplace instructions, safety information and emergency procedures
- recording and maintaining accurate information relating to reach stacker operations

TASK 21

- shutting down a reach stacker, greater than 3 tonnes capacity in accordance with manufacturer specifications and safe work procedures

TASK 22

Stabilising reach stacker by:

- applying computer stability reading as a percentage
- deploying stabilisers if fitted

TASK 23

Test-lifting container just clear of lifting plane to allow for checks ensuring:

- all reach stacker hydraulic controls and brake systems are functioning properly
- boom length and height are displayed correctly
- computer/weight scale is working correctly
- computer correctly displays stability percentage of reach stacker

TASK 24

Using and interpreting reach stacker manufacturer specifications and data, including load charts, to enable reach stacker to be configured including:

- boom length
- use of stabilisers (where fitted)

TASK 25

Using communications signals including:

- luff boom down – hand signals and two-way radio
- luff boom up – hand signals and two-way radio
- stop – hand signals and two-way radio
- telescope out – hand signals and two-way radio
- telescope in – hand signals and two-way radio

Score for assessments

Knowledge Assessment		
Correct answers:	_____ /	
Percentage:		
Result (circle):	Satisfactory	Not satisfactory
Practical Assessment		
Result (circle):	Satisfactory	Not satisfactory
Trainer/supervisor name:		
Trainer/supervisor ID:		
Signature:		



Assessor comments to clarify assessment results:

.....

.....

If you have any questions about your results, speak to your trainer/supervisor.

You will receive a Statement of Attainment if your assessment is successful. You may also receive a convenient business sized card with the RTO's relevant details to keep as proof of compe

Certificate of Attainment

Name _____

has successfully completed

RII09 Resources and Industry Training Package

Unit of competency _____

Awarded on _____

Trainer/Assessor _____

Number (if applicable) _____

RTO _____

RTO Number _____