

# Learner Workbook

## Student copy

# Front End Loader- Wheeled

TICKET



Training support material for:

RIIMPO321F  
Conduct civil construction wheeled  
front end loader operations



# Contents

How to use this guide	4
Acknowledgements	6
Introduction to wheeled front end loader	4
General information	12
Chapter 1 Plan and prepare for work	37
Chapter 2 Identify and control hazards	47
Chapter 3 Check and monitor equipment	73
Chapter 4 Operate/use equipment	85
Chapter 5 Shut down and store equipment	111
Chapter 6 Housekeeping	117
Chapter 7 Record keeping	123
Chapter 8 Relocate equipment	125

# Introduction to Wheeled Front End Loader



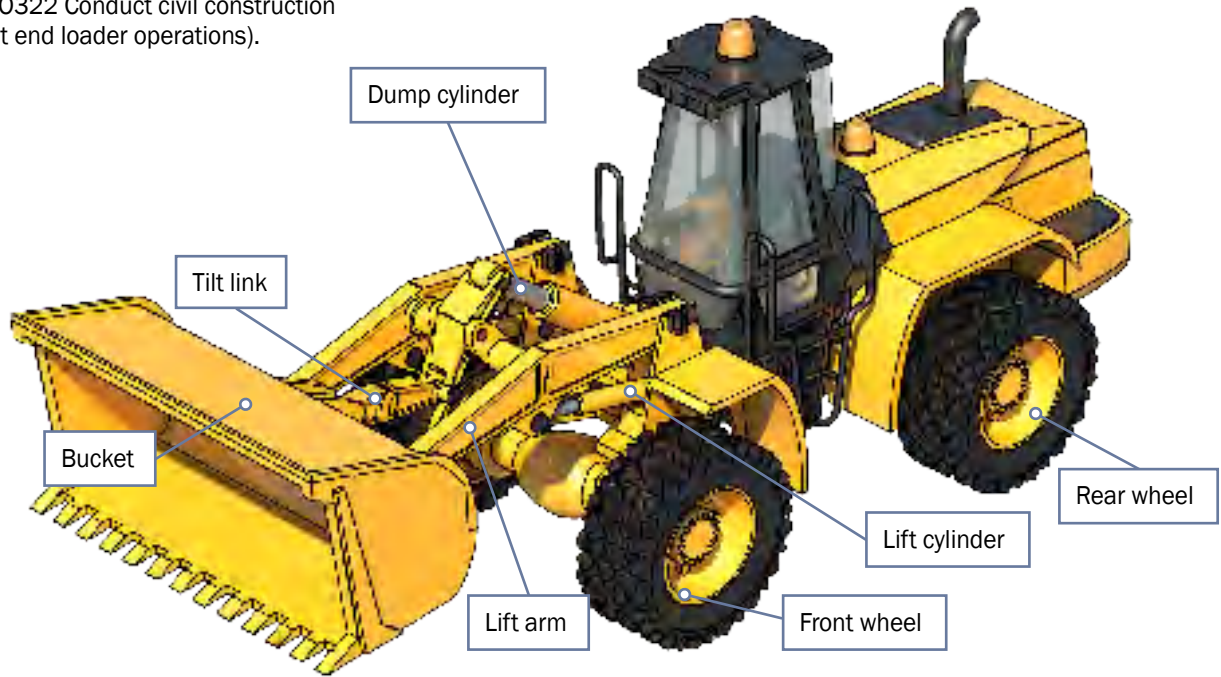


## An example of a wheeled front end loader

A wheeled front end loader is a type of machine, that has a front-mounted square wide bucket connected to the end of two booms (arms) to scoop up loose material such as dirt, sand or gravel and move it from one place to another without pushing the material across the ground.

A wheeled front end loader is commonly used to move material from ground level and deposit it into an awaiting dump truck, stockpile or into an open trench excavation.

Front end loaders can also come in tracked models (refer RIIMPO322 Conduct civil construction tracked front end loader operations).



Notes



2. Question: What is a front end loader commonly used for?

Answer:





# Identify and control hazards

## Chapter 2











# Check and monitor equipment

## Chapter 3



