

Learner Workbook

Marking Guide

Front End Loader- Wheeled

TICKET



Training support material for:

RIIMPO321F
Conduct civil construction wheeled
front end loader operations



Contents

How to use this guide	4
Acknowledgements	6
Introduction to wheeled front end loader	4
General information	12
Chapter 1 Plan and prepare for work	37
Chapter 2 Identify and control hazards	47
Chapter 3 Check and monitor equipment	73
Chapter 4 Operate/use equipment	85
Chapter 5 Shut down and store equipment	111
Chapter 6 Housekeeping	117
Chapter 7 Record keeping	123
Chapter 8 Relocate equipment	125

Introduction to Wheeled Front End Loader



What do you use a front end loader for?

- Agriculture – farming
- Construction
- Clean up
- Moving dirt/rocks etc
- Can use for lifting purposes



What industries do you use a front end loader in?

- Civil construction



- Mining



Notes



1. Question: What industries do you use a front end loader in?

Answer:..

Civil construction.....

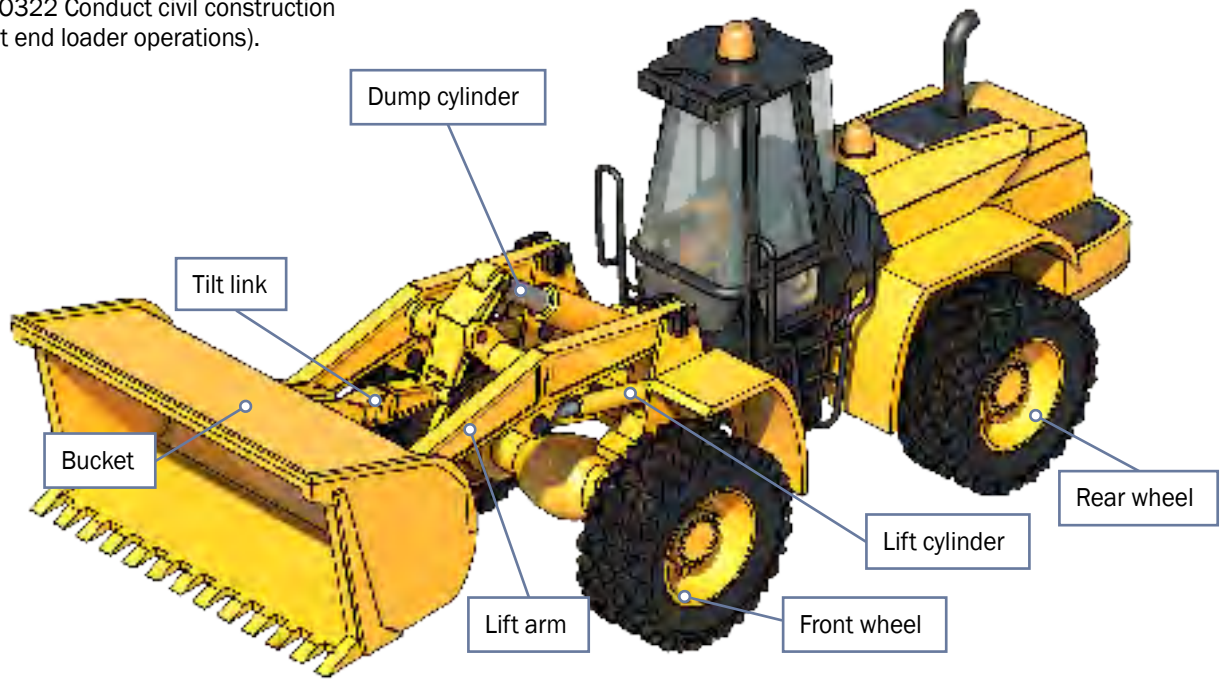
Mining.....

An example of a wheeled front end loader

A wheeled front end loader is a type of machine, that has a front-mounted square wide bucket connected to the end of two booms (arms) to scoop up loose material such as dirt, sand or gravel and move it from one place to another without pushing the material across the ground.

A wheeled front end loader is commonly used to move material from ground level and deposit it into an awaiting dump truck, stockpile or into an open trench excavation.

Front end loaders can also come in tracked models (refer RIIMPO322 Conduct civil construction tracked front end loader operations).



Notes



2. Question: What is a front end loader commonly used for?

Answer: A wheeled front end loader is commonly used to move material from ground level and deposit it into an awaiting dump truck, stockpile or into an open trench excavation.

Plan and prepare for work

Chapter 1



QUESTION 1

What are the National Work Health (WHS) and Occupational Health and Safety (OHS) Acts about?

The Acts explain how to keep your workplace **safe** and **healthy**. They explain what you need to do to meet your duty of care.

For example:
You must make sure you do earthmoving work in a way that won't put yourself or others at risk. You must use earthmoving equipment according to instructions.

Note:
Check your state requirements as Acts may vary from state to state



QUESTION 2

Under WHS/OHS laws, what are your responsibilities while working?

You must work in a way that is safe. You must not risk the health and safety of yourself or others.



Notes



35. Question: What do the Work Health and Safety Acts tell you?

Answer: The Acts tell you how to keep a workplace healthy and safe.

.....
.....
.....
.....
.....
.....
.....
.....
.....
.....
.....
.....
.....
.....
.....
.....
.....
.....
.....
.....
.....
.....

Identify and control hazards

Chapter 2



QUESTION 34

How do you safely get in and out of the loader's cabin?

Always use three (3) points of contact facing the machine.
For example, use two hands and one foot or two feet and one hand.



**3 point contact
(both hands and foot)**



58. Question: How many points of contact should you have if you get in or out a front end loader?

Answer: You should have 3 points of contact.

.....

.....

.....

.....

.....

.....

.....

.....

.....

.....

.....

.....

.....

.....

.....

.....

.....

.....

.....

.....

.....

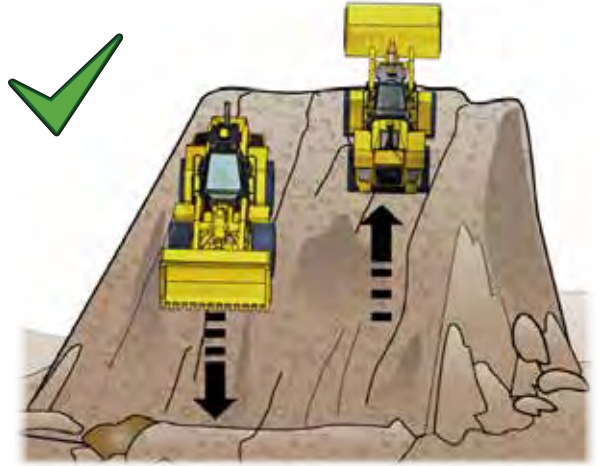
.....

.....

QUESTION 35

Which way should you travel when driving on sloping ground?

Go straight up or down the hill, not at an angle.



59. Question: Which way should you travel when driving on sloping ground?.....

Answer: Go straight up or down the hill, not at an angle.

.....

.....

.....

.....

.....

.....

.....

.....

.....

.....

.....

.....

.....

.....

.....

.....

Check and monitor equipment

Chapter 3



QUESTION 55

When do you test and inspect the front end loader?

Every day. Always test and inspect before you use the loader.
You do this to make sure it's safe to use.



78. Question: How often should you inspect and test the front end loader?

Answer: Everyday before you use it.